



Embassy Gardens, London
SW11

GARTONJONES.COM

Embassy Gardens, London , SW11

£1,050 Per Week

A spacious 2-bedroom apartment of approx. 938.00sq.ft (87sq.m) available to rent in Legacy Building, part of the Embassy Gardens development located in the heart of Nine Elms. The apartment benefits from an open plan reception room, a smart kitchen with a breakfast bar and integrated appliances, good storage throughout including built-in wardrobes to the bedrooms and a utility cupboard housing a washer dryer. Further benefits include two luxury bathroom suites, wood flooring and comfort cooling.

For the residents' private use there is a 24-hour concierge, cinema screening room, library & lounge, business centre, yoga studio, 2 private gymnasiums, and a very cool indoor/outdoor swimming pool. Residents of Embassy Gardens also have access to the world-famous sky pool, connecting two of the towers at Legacy Building. Amenities such as District coffee shop, Darby's restaurant, The Alchemist cocktail bar, as well as a Waitrose convenience store are located on-site but you are also close to a host of other local shops and restaurants on your doorstep. Nine Elms Station is less than a 5 minutes' walk from Legacy Building providing easy access into Central London and the transport links of Vauxhall Station are also within walking distance.

Please note furniture may differ to that shown in the current photos.

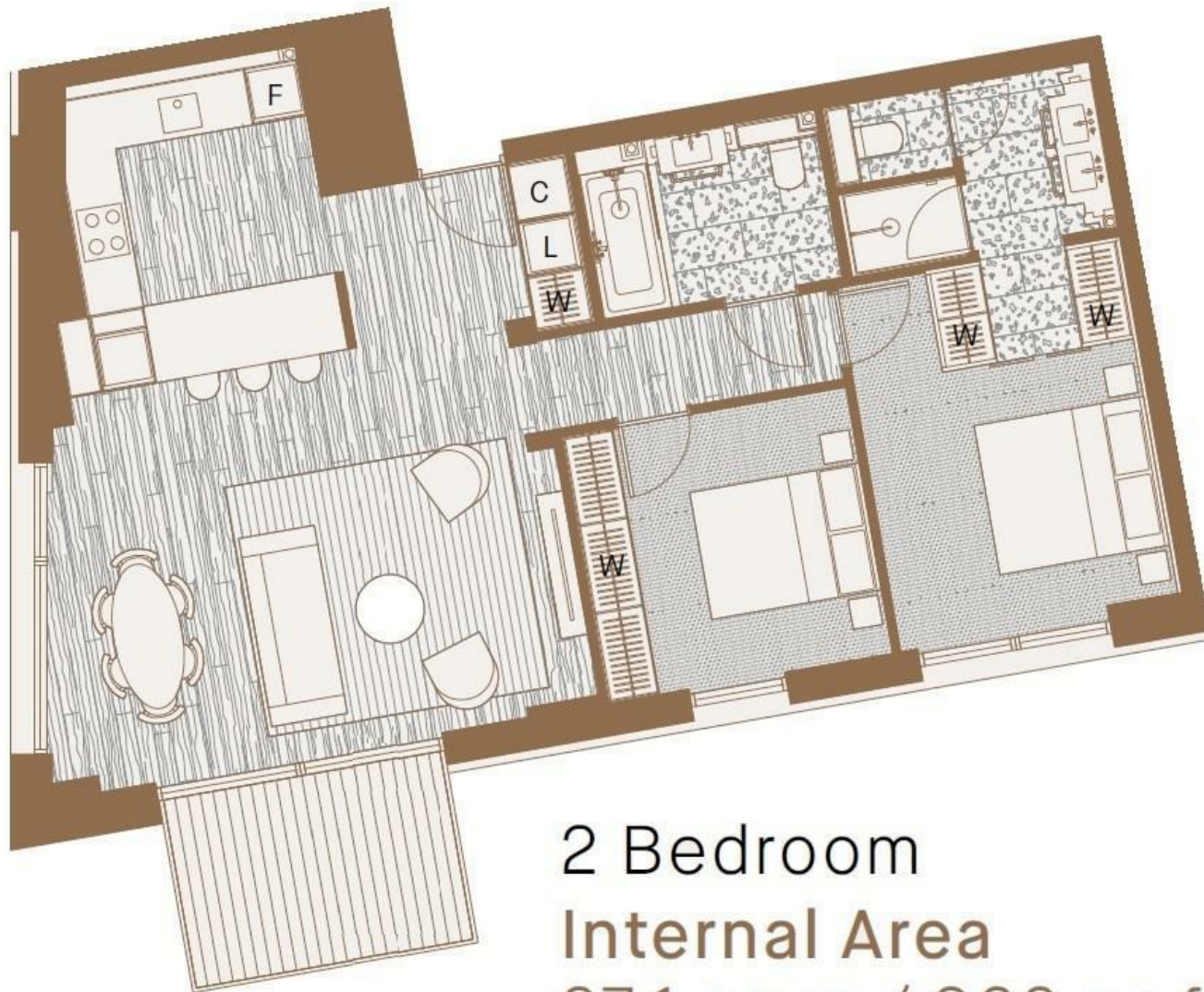
- 2 Bedrooms
- 938sq.ft (87sq.m)
- 2 Bathrooms (1 En-Suite)
- Open Plan Reception
- Balcony
- Sky Pool
- Residents Gyms
- 24 Hour Concierge
- Cinema Screening Room
- 0.3 Miles to Nine Elms Tube Station

GARTON JONES.COM

9 Albert
Embankment
London
SE1 7SP

Lettings:
+44 (0) 20 7735 1888
nineelms@gartonjones.com
www.gartonjones.com





2 Bedroom
Internal Area
87.1 sq m / 938 sq ft

